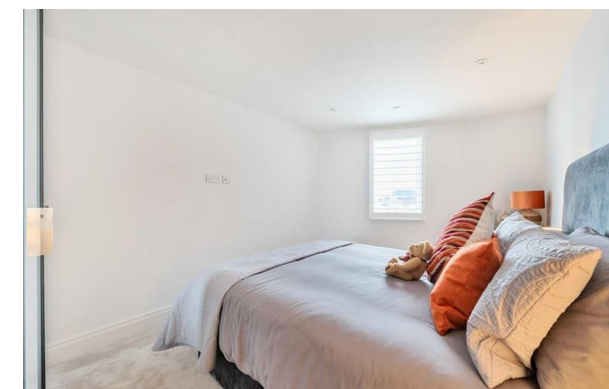




RESIDENTIAL



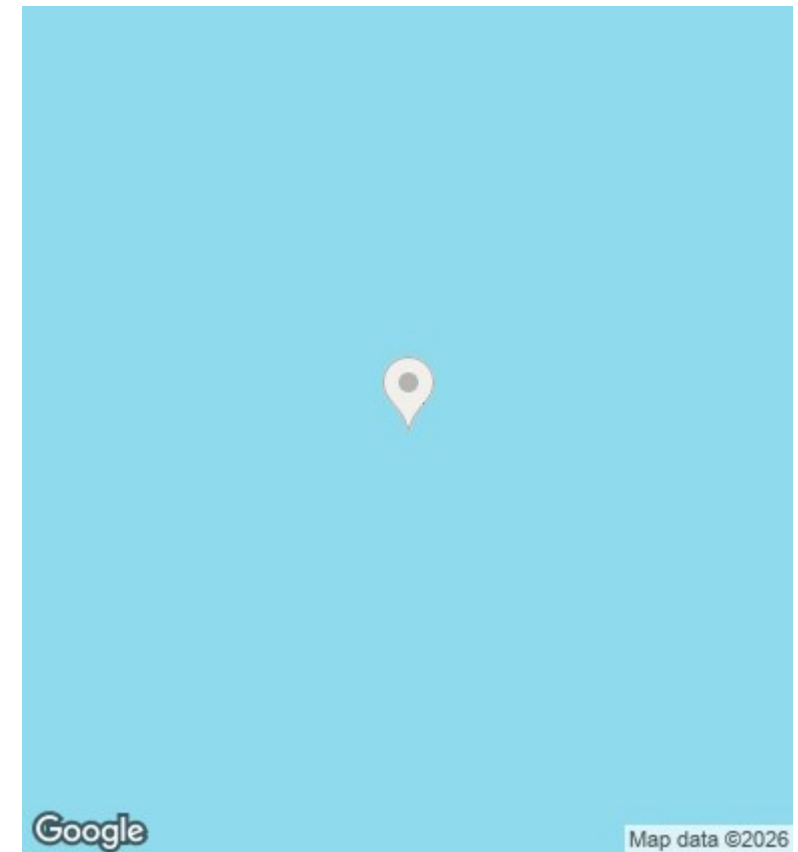
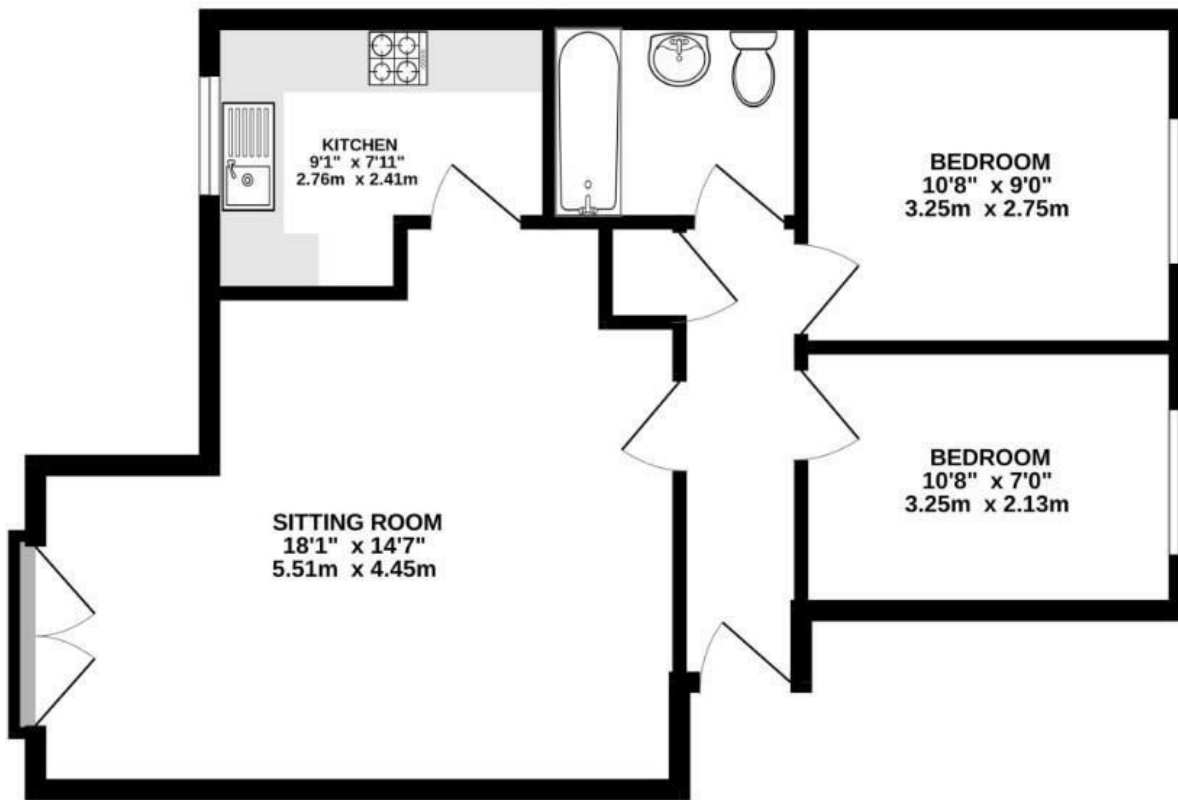
Ellis Court Textile Street, Dewsbury, WF13 2EX

£100,000

- Sold with tenant in situ for immediate income
- Achieving 7% NET Yield
- Spacious open-plan living area with fitted kitchen and integrated appliances
- Excellent commuter location
- Modern two-bedroom apartment in a well-maintained development
- Close to Dewsbury train station, town centre shops, and local amenities

Unit 1 Feast Field, Horsforth, Leeds, LS18 4TJ
0113 3224 345

info@tkiresidential.co.uk
www.tkiresidential.co.uk



Directions

Viewings

Viewings by arrangement only. Call 0113 3224 345 to make an appointment.

Council Tax Band

EPC Rating:

C

Energy Efficiency Rating		Current	Potential
<i>Very energy efficient - lower running costs</i>			
(92 plus) A			
(81-91) B			83
(69-80) C		69	
(55-68) D			
(39-54) E			
(21-38) F			
(1-20) G			
<i>Not energy efficient - higher running costs</i>			
England & Wales		EU Directive 2002/91/EC	